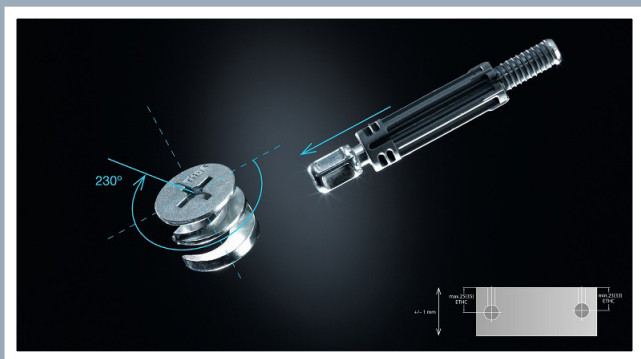




Connectors

Furniture
connectors
product guide



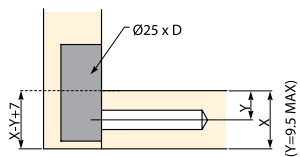
Gelmar

System 3

Fittings for face and edge boring

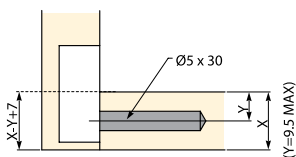
- Two-piece connector
- Half-turn locking system
- Almost full concealment
- Wide tolerances

Housing assembly
- 540 White

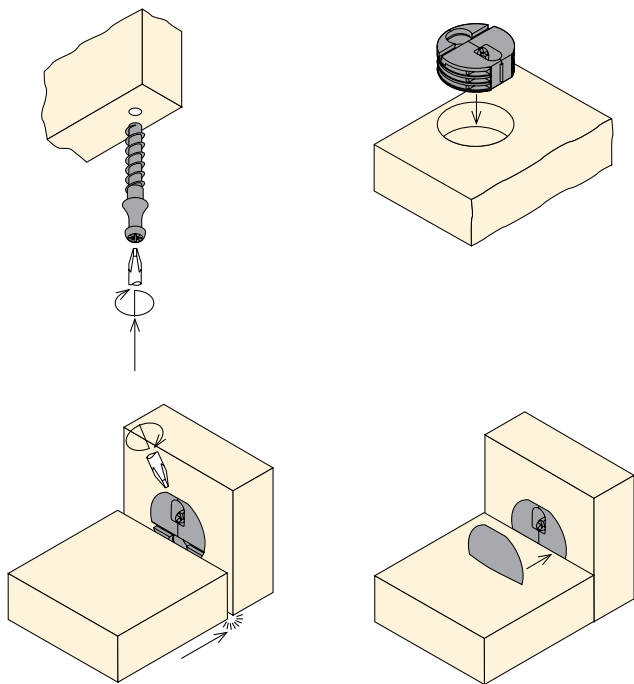


X, Y - depends on board thickness

Screw dowel - $\varnothing 5$
- 541

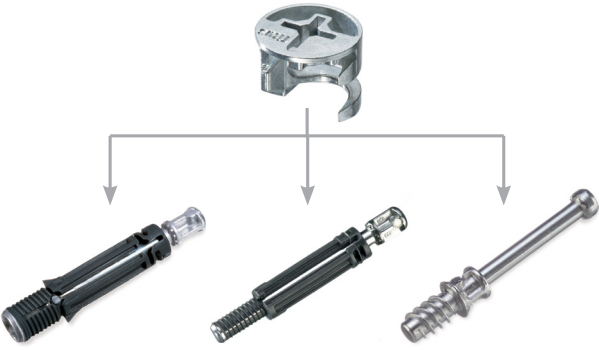


X, Y - depends on board thickness

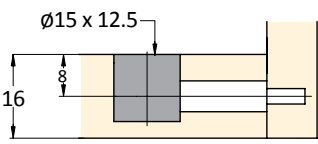
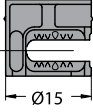


System 5 Cams and dowels

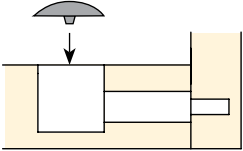
- Ultimate cam strength
- Smooth tightening action
- Broader range of drilling tolerances
- Faster assembly and consistently strong joint
- Cam-retaining pips ensure that the cam is held in panel position prior to assembly



Cam 3000
- 532



Cam Cover Caps
- 516 White
- 517 Brown
- 518 Black
- 519 Oak
- 525 Cherry

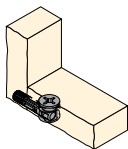


System 5

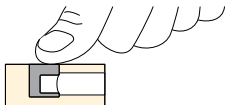
Cams and dowels

- Fastest assembly system on the market
- Tool-free hand insertion
- Creates an optimal joint
- High drilling tolerances (2mm) 33 - 35mm ETHC

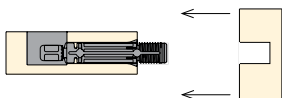
Quickfit - TL2



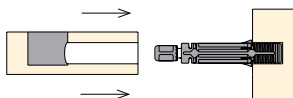
1. Press the cam into the face board



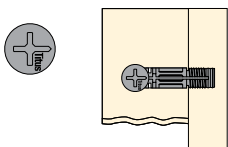
2a. Either push dowel into edge hole or ...



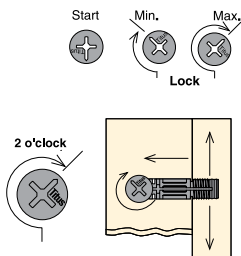
2b. Insert the dowel into side panel



3. Assemble the panels

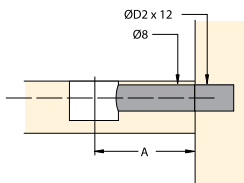


4. Tighten cam to lock dowel



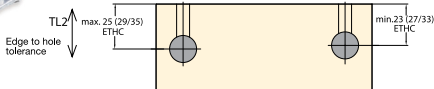
Quickfit - TL2

- 527



Quickfit - TL2

- 528



Tolerance range

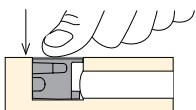
System 5

Cams and dowels

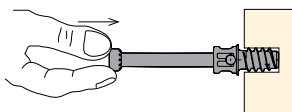
- High quality zinc-steel dowel with greater resistance to torsion and pull-out
- Suitable for use with all Ø12mm and Ø15mm Cam2000 and Cam3000 products
- 'Klix' locking feature provides a strong, vibration proof joint
- Twinstart thread for faster and reliable insertion

Combi dowel

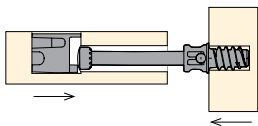
1. Press the cam into the face board



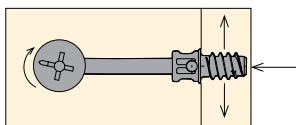
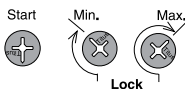
2. Insert the dowel into the side panel



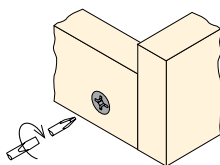
3. Assemble the panels



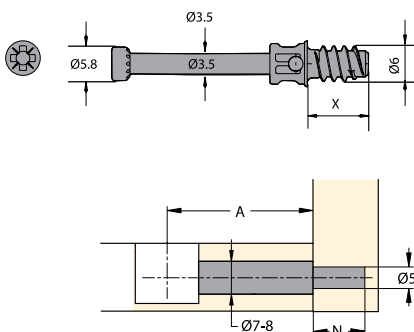
4. Tighten the cam to lock dowel



5. Assembled panels



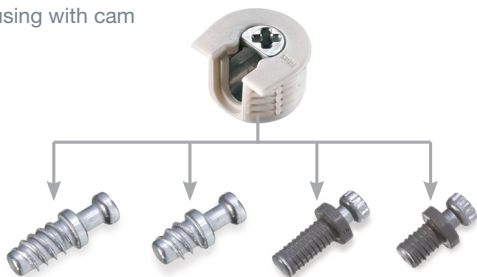
Combi dowel - Ø5
- 530



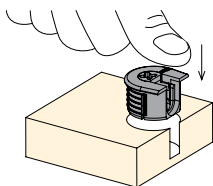
System 6

Quickfit-Expando connectors

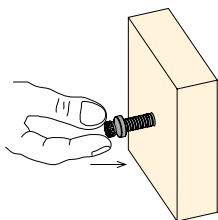
Housing with cam



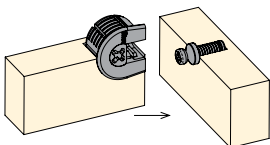
1. Press the housing into the face board



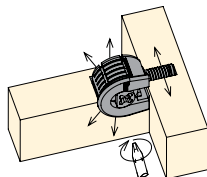
2. Press the dowel into side panel



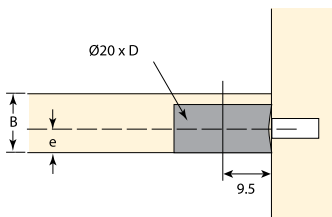
3. Assemble the panels



4. Tighten the joint



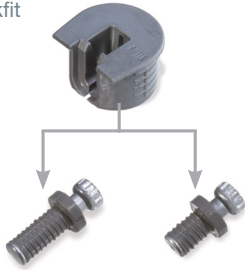
Housing with cam
- 536 White



System 6

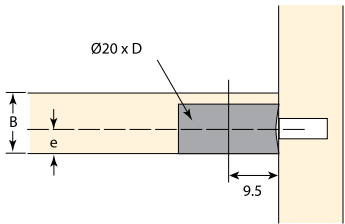
Quickfit-Expando connectors

Wedgefit for Quickfit



Wedgefit for Quickfit

- 545 White
- 534 Black

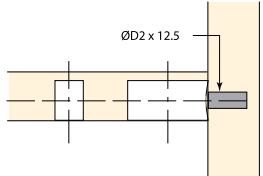


Quickfit Expando Dowel

- 533 12.5 x Ø5

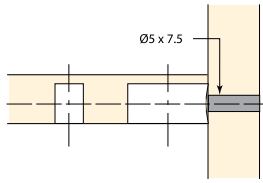
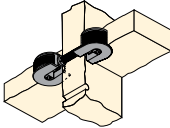


D2= Ø5mm



Quickfit Expando Dowel

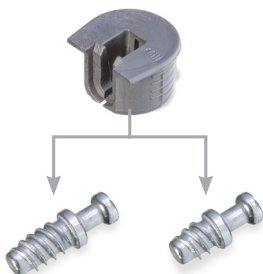
- 542 8 x Ø5 (For Back-to-back application)



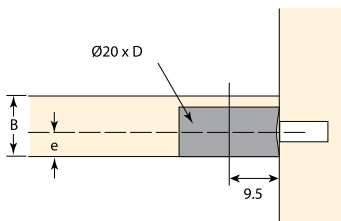
System 6

Quickfit-Expando connectors

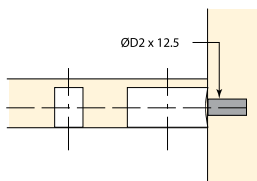
Wedgfit for screw-in dowels



Wedgfit for screw-in dowels
- 535 White



Steel screw-in Dowel
- 537 11.5 x Ø5



Steel screw-in Dowel
- 538 8 x Ø5 (For back-to-back application)

